

Dehumidifier Installation Kit

Installation Instructions

1. Attach threaded end of the 3' hose to the dehumidifier outlet and hand tighten the coupling nut. Route 3' hose to a condensate pump inlet hole or floor drain.

NOTE: If using a floor drain, position 3' hose over drain.

NOTE: If using a condensate pump, continue installation steps as listed below.

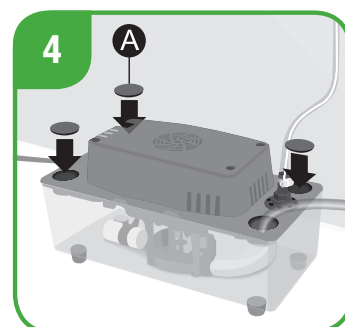
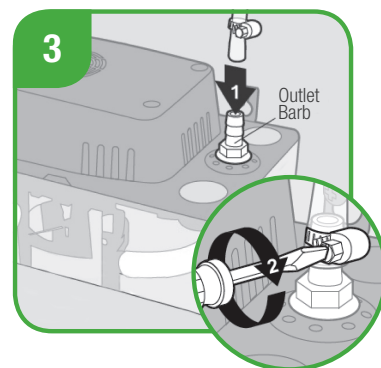
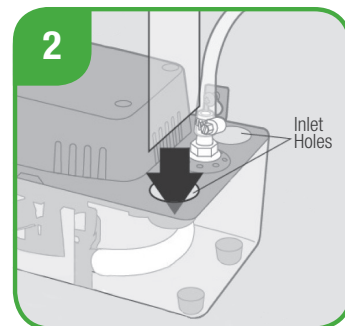
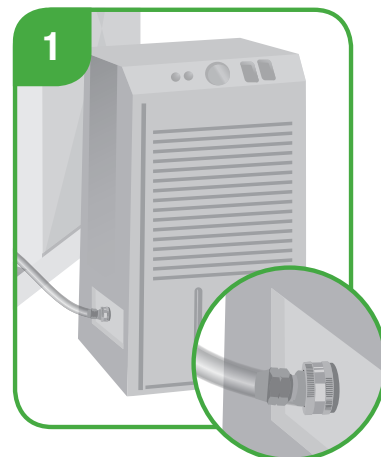
2. Install dehumidifier drain tubing into one of the four inlet holes, making sure tubing is straight.
3. Attach 3/8" diameter (20") clear vinyl plastic tubing to the outlet barb. Secure with 1/2" hose clamp (not included). Route the tubing up and away from the dehumidifier pump. Avoid compressing or kinking the tubing.

NOTE: The tube route should be the shortest possible distance from the pump to the building exterior or other drain location. For best results, the distance that the water must go UP should be shorter than the distance that it goes DOWN.

NOTE: Check local codes for water discharge requirements.

4. Attach covers (A) to remaining dehumidifier pump inlet holes.

NOTE: Covering inlet holes prevents condensate pump from collecting debris and insects.



CAUTIONS: Do not use to drain hot water. Do not drink from hose. Do not allow water to spray or discharge into an electrical outlet; severe electrical shock can result. Follow condensate pump manufacturer's instructions for more installation details.

MANUFACTURED FOR:
SimpleAir Care, LLC
P.O. Box 357
Columbus, TX 78934
855.342.3732
SimpleAirCare.com